

# Annual Report 2014-2015



THE  
**LORD'S  
PLACE**  
*Breaking the Cycle  
of Homelessness*



Jan 25, 2016

Dear Friends,

We are honored to present our 2014/15 Annual Report to the friends, funders and supporters of The Lord's Place— and all of the community members who care about our mission to break the cycle of homelessness. It has been a remarkable year with many significant successes and achievements.

Of particular note this past year:

We saw our budget exceed \$7 million, which allowed us to grow our operations, increase the number of beds we provide for our homeless clients, and strengthen the broad range of services that we offer.

In keeping with our mission to break the cycle of homelessness, we created the Tomorrow Fund to ensure that none of the children living at our Family Campus grow up to have homeless children of their own. The generous contributions we received for this fund have allowed us to give our children the normal joys of childhood, despite their very challenging life experiences. This is a program that we are particularly proud of – and we are confident that it will continue to have a very special impact on our children.

Among our many achievements, we are particularly proud of our investment in a housing program for Burckle Place graduates. Burckle Place 2, which will break ground this winter, will provide affordable housing for 11 Burckle graduates who are working to become financially independent.

This life-changing work occurs because of our dedicated and compassionate staff – one of our greatest resources – at The Lord's Place. For the second year running, we were recognized as one of the “Best Places to Work” in the state of Florida by Florida Trend Magazine.

Thanks to the expert leadership of our Board of Directors, The Lord's Place remains an outstanding agency – always striving to be a catalyst of change for those we serve. The Lord's Place has been recognized nationally as a leader in homeless services, exhibiting best practices, unique innovations and extraordinary compassion and vision.

We thank our many, many generous donors and supporters – those who provide funding both large and small, and those who volunteer and enrich the work we do every day. Because of all of those who care about what we do, we can continue to build on the housing that we have, the programs that we provide, the services that we offer, and the care and compassion with which we surround our clients every day.

Together, we are all working to break the cycle of homelessness.

Pamela McIver  
Board Chair

Diana Stanley  
CEO

# Our Programs



## Job Training & Social Enterprises

The Lord's Place works with clients individually to help them find employment. We offer Job Readiness courses, job coaches and two social enterprise businesses to give clients work experience. For those with significant barriers to employment, these programs offer assistance critical to their independence.

## Housing

Our diverse housing initiatives provide shelter to those who need it most: families, single women, and those who struggle with mental illness and/or substance abuse. We offer comprehensive programming to ensure all individuals housed with us have their needs met.

## Reentry Services

Formerly incarcerated people are nearly ten times more likely to become homeless than the average person. Our reentry services work with formerly incarcerated people to help them break barriers and find housing, employment and stability.

## Community Engagement / S.O.A.R.

S.O.A.R. (SSI/SSDI, Outreach, Access and Recovery) engages with the chronically homeless and helps them navigate government benefits so they can receive the care they need.





## Planting Seeds for Our Future

Years ago, Steve Mazza was living in a motor home in his friend's backyard. He had lost custody of his baby daughter and felt distraught. Working odd jobs and drinking, he found himself longing for a change—but like so many in our society, he wasn't sure where he could turn.

When Steve was referred to The Lord's Place, he began a long journey to rebuild his life. He found housing at our Men's Campus, enrolled in our Job Ready course and made his way to our apprenticeship program at Café Joshua. As a testament to the change that was taking place in his life, Steve soon regained custody of his daughter and moved out of the Men's Campus. Now Steve works full time as the Supervisor of the Catering Department—every day he drops his daughter off before work, and picks her up in the afternoon. He is a devoted father and a valued member of the our community.

The Lord's Place embraces Steve as an outstanding model for the work that we do. There are so many families who, like Steve's, need care to flourish. The Lord's Place exemplifies "breaking the cycle of homelessness" by planting seeds with our clients, which will grow and continue to transform lives long into the future.

**236**

clients completed the job-readiness training

Our Job Training participants received

**135**

job offers

**299**

individuals, including 53 families, received supportive housing

**95%**

of our clients were not homeless by the end of the year

**1,600**  
people  
served  
annually

**126**

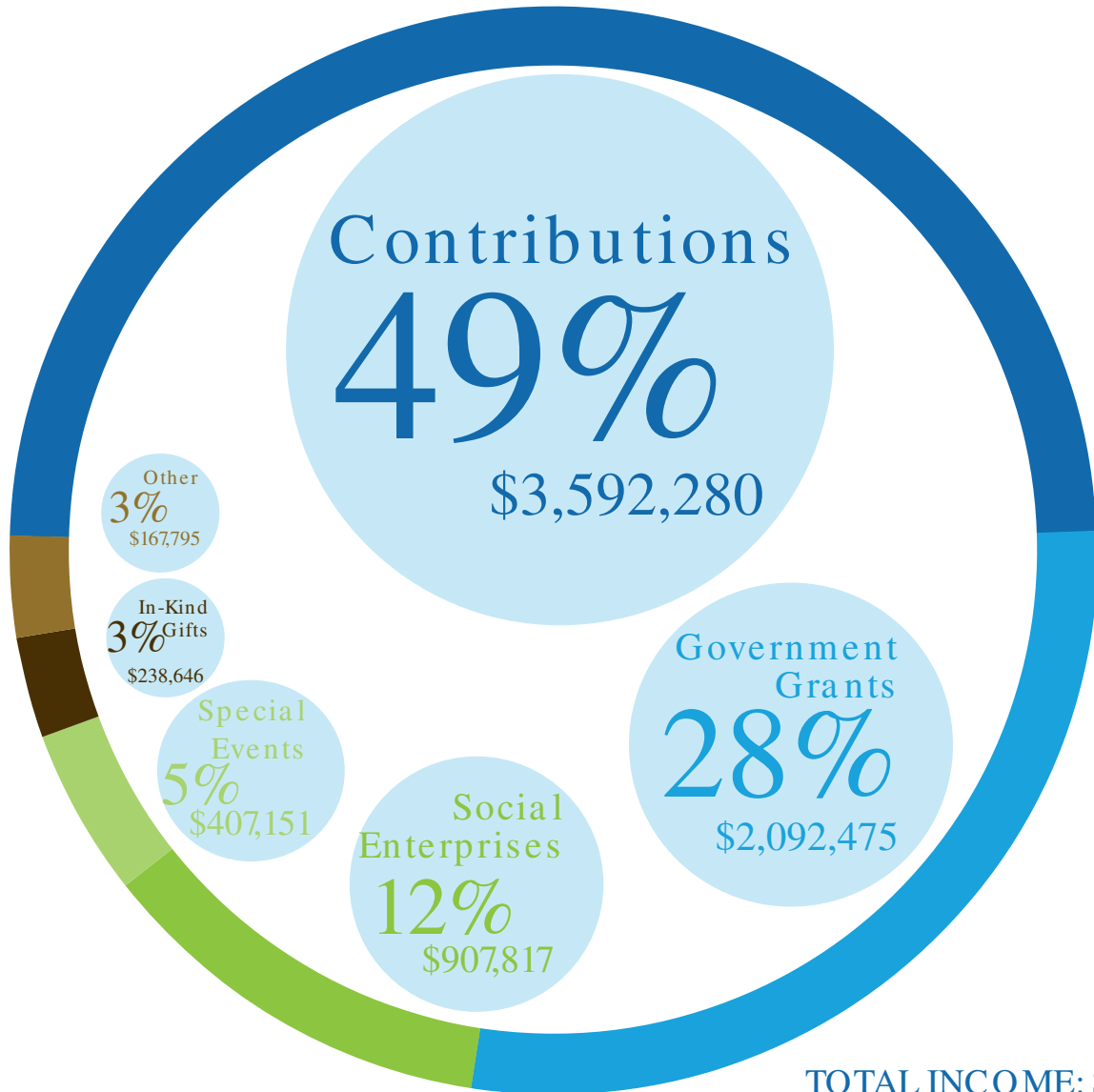
clients were served by our Reentry program

For every dollar we spent on our Reentry program, the county saved

**\$2.89**

# Fiscal Year: July 1, 2014 -

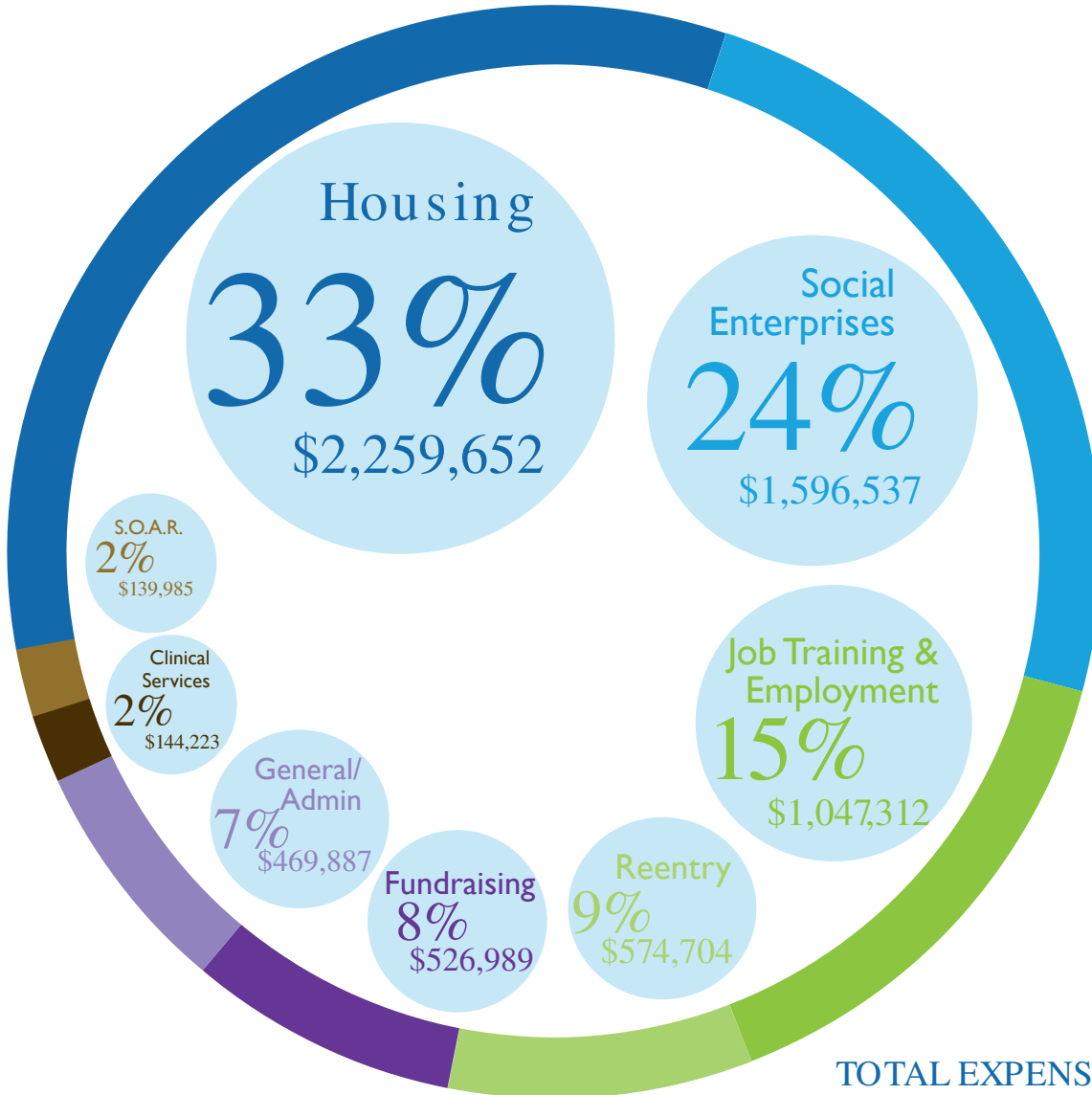
## Revenue



TOTAL INCOME: \$7,406,164

# June 30, 2015

## Expenses



TOTAL EXPENSES: \$6,759,289





## Board of Directors, 2014-2015

Pamela McIver - Chair  
Kate Grangard - Vice Chair  
Cornelia Thornburgh - Secretary  
Robert Katzen - Treasurer  
Jack Scarola - Past Chair

Matthew Barnes  
Diana Barrett  
Robert Barrett, Jr.  
Theodore A. Deckert

Benjamin Dewer  
Michael Diaz  
Anthony Javarone  
Dean Lavallee

Steven Malone  
Joyce McLendon  
Kelly Moore  
Jamie Niemie

Rev. Dr. Robert Norris  
Jamie K. Stern  
Bob Van Gieson  
Bert Winkler

## Executive Leadership Team

Diana Stanley, Chief Executive Officer  
Daniel Gibson, MSW, Chief Program Officer  
Toby Douthwright, Chief Financial Officer  
Jan E. Phillips, SPHR, Chief Human Resources Officer

### Our Mission:

The Lord's Place is dedicated to breaking the cycle of homelessness by providing innovative, compassionate and effective services to men, women and children in our community.



2808 N. Australian Avenue, West Palm Beach, FL 33407

For more information, please call us at 561-494-0125 or visit us at [thelordsplace.org](http://thelordsplace.org).

